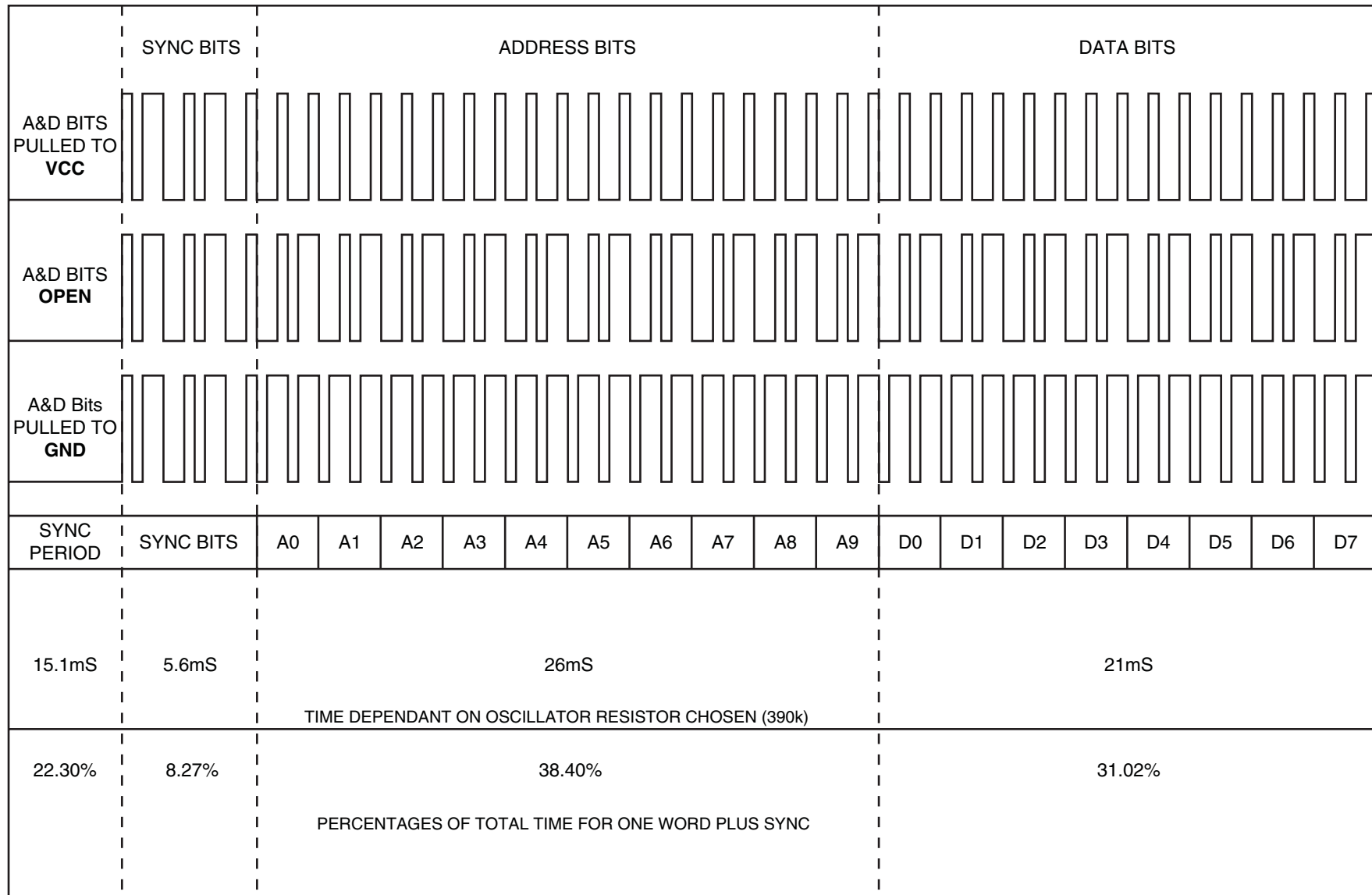
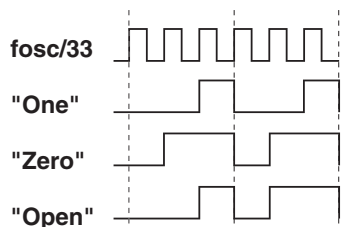


# DATA STRUCTURE FOR 10-BIT ADDRESS, 8-BIT DATA, ENCODER/DECODER



## Bit Pattern Interpretation



159 Ort Lane • Merlin, OR 97532  
 541-471-6256 • FAX 541-471-6251  
[www.linxtechnologies.com](http://www.linxtechnologies.com)

**Notes:** *Times are averaged for several encoders and are approximate.  
 Bit pattern must be verified 2 out of 3 times to be acknowledged as valid.*

**References:** Holtek 3<sup>18</sup> Series Encoders Datasheet ©1999 Holtek Semiconductors, Inc.  
 OEM Transmitter Data Guide, ©2000, Linx Technologies, Inc.  
 Concept & Research: Dylan Horvath, Cortex Design  
 Verification: Linx Technologies Engineering Department