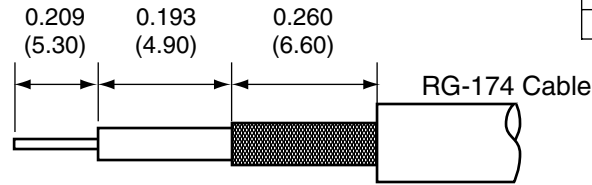


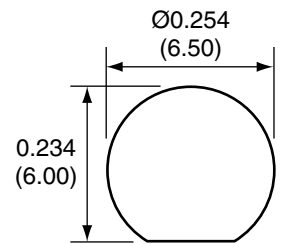
| Description | Material | Finish |
|---------------|------------|--------|
| Body | Brass | Nickel |
| Pin | Brass | Gold |
| Pin Insulator | Teflon | Teflon |
| Washer | Brass | Nickel |
| Nut | Brass | Nickel |
| Spacer | Teflon | Teflon |
| Shield Sleeve | Brass | Nickel |
| Retaining Nut | Brass | Nickel |
| Crimp Ring | Brass | Nickel |
| Heat Shrink | Polyolefin | Black |

RECOMMENDED CABLE STRIPPING DIMENSIONS

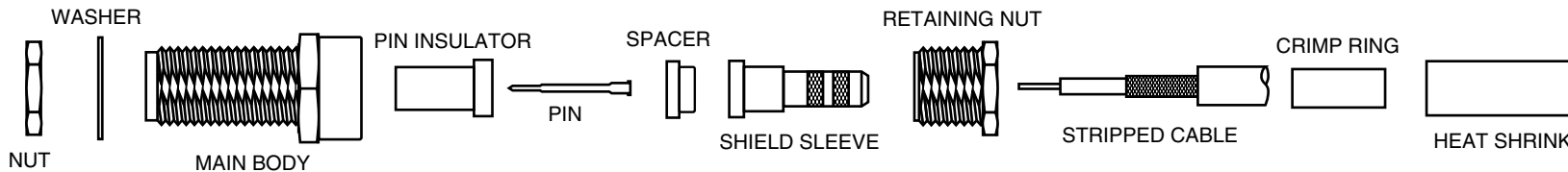
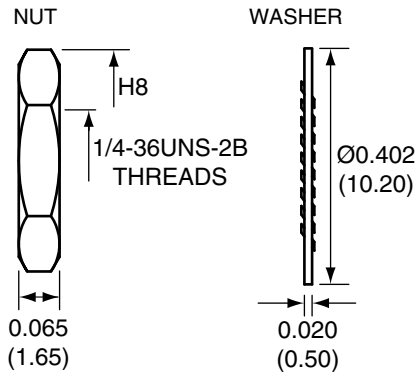
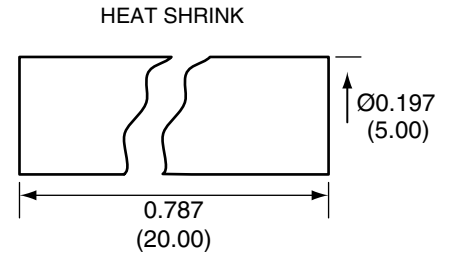
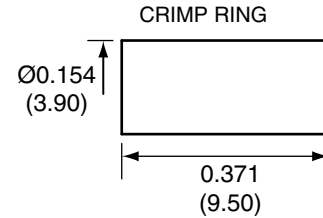
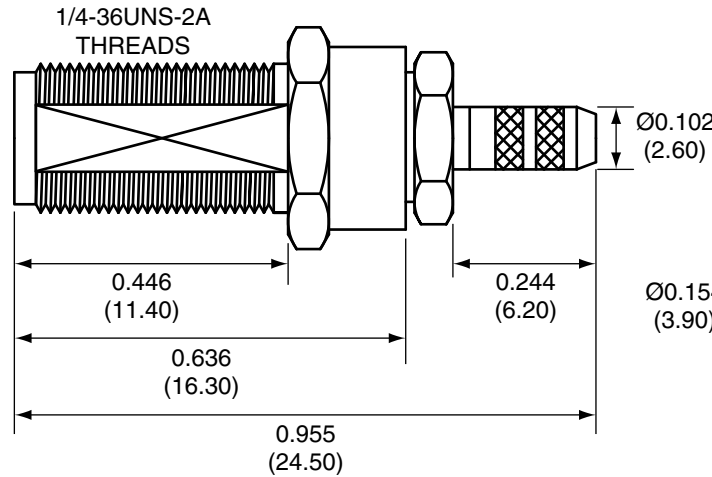


| REVISIONS | | | |
|-----------|---|---------|------|
| REV | DESCRIPTION | DATE | APPV |
| B | Cable stripping dims, new spacer shape, heat shrink | 11/1/10 | CJ |

RECOMMENDED MOUNTING HOLE



SIDE VIEW



NOTES: (UNLESS OTHERWISE SPECIFIED)

1. ALL DIMENSIONS ARE IN INCHES [mm].
2. DIMENSIONS APPLY AFTER FINISHING.
3. MANUFACTURE TO BE COMPLIANT WITH EU RoHS DIRECTIVE.
4. SAFETY BREAK ALL SHARP CORNERS AND EDGES .02 MAXIMUM.

CONREVSMA005 ASSEMBLY INSTRUCTIONS

1. Insert the center conductor through the retaining nut, shield sleeve, and spacer.
2. Solder the pin to the center conductor.
3. Insert the pin into the pin insulator, then screw the main body onto the retaining nut.
4. Wrap the braid around the tail of the body and crimp the ring with a 0.128" hex crimp tool (or one labeled for use with RG-174 cable).
5. Use the heat shrink to cover the crimp ring.
6. Use the nut and washer to secure the connector to a case.

WARNING: THIS DRAWING CONTAINS PROPRIETARY INFORMATION THAT IS THE SOLE PROPERTY OF CONNECTOR CITY, AND SHALL BE TREATED AS SUCH. NO DISCLOSURE OR REPRODUCTION OF THIS DOCUMENT IS PERMITTED, IN WHOLE OR IN PART, WITHOUT THE EXPRESS WRITTEN PERMISSION OF CONNECTOR CITY OR ITS DESIGNATED AGENTS.

| | | |
|-----------|---|-----------------|
| MATERIAL: | TOLERANCES: .020 [0.50]-200 [5.00]= ±.008 [0.20] .200 [5.00]-1.200 [30.00]= ±.016 [0.40] 1.20 [30.0]-4.75 [120.0]= ±.024 [0.60] 4.75 [120.0]-12.40 [315.0]= ±.040 [1.0] | PROJECTION: |
| FINISH: | DRAWN: CJ | DT: 11/1/10 |
| | ENGR: | DT: |

CONNECTOR CITY THE VALUE OF CONNECTIONS
159 ORT LANE
MERLIN, OR 97532

TITLE:
**RP-SMA FEMALE BULKHEAD MOUNT
CABLE END CRIMP FOR RG174 CABLE**

| | | |
|------------------|---------------------------------|-----------------|
| SIZE A | DWG. NO. CONREVSMA005 | REV B |
| SCALE: 2:1 | DO NOT SCALE DRAWING | SHEET 1 OF 1 |