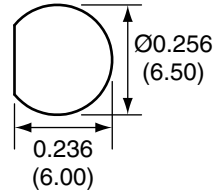


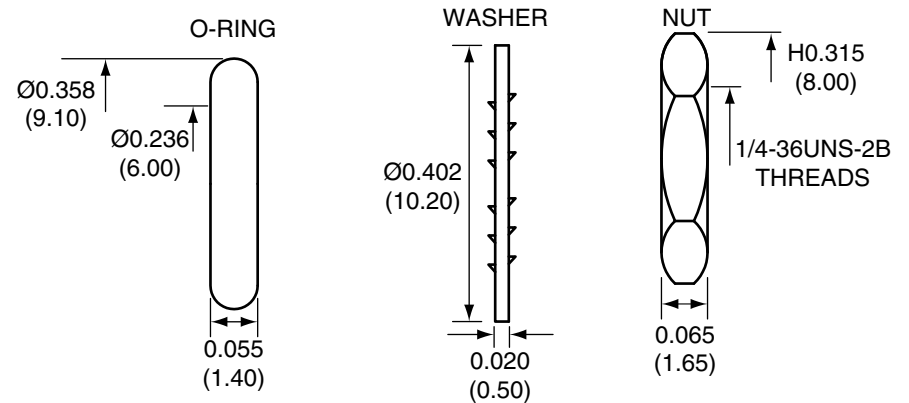
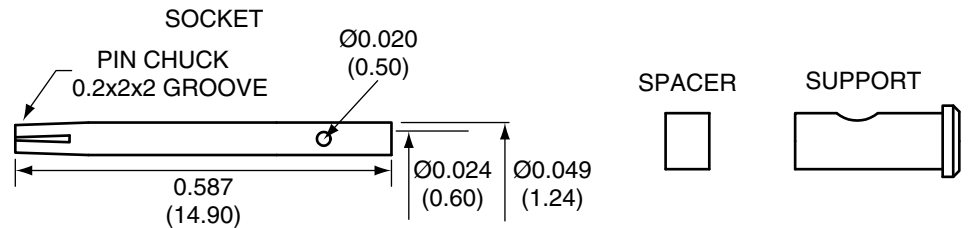
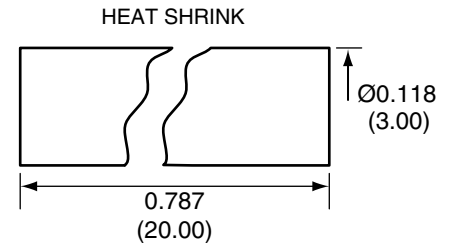
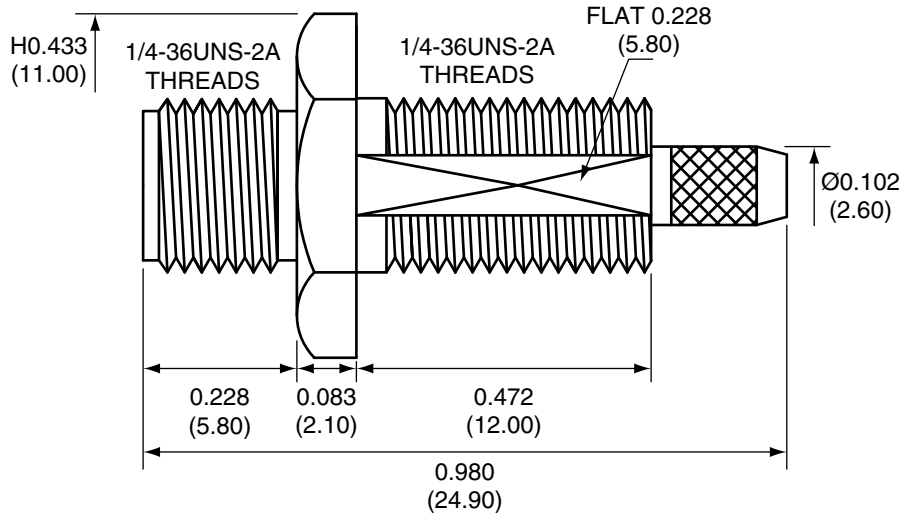
| Description | Material   | Finish |
|-------------|------------|--------|
| Body        | Brass      | Nickel |
| Socket      | BE CU      | Gold   |
| Insulation  | Teflon     | Teflon |
| O Ring      | Si Rubber  | Rubber |
| Washer      | Brass      | Nickel |
| Nut         | Brass      | Nickel |
| Spacer      | Teflon     | Teflon |
| Support     | Brass      | Nickel |
| Heat Shrink | Polyolefin | Black  |

RECOMMENDED MOUNTING HOLE



| REVISIONS |  |         |      |
|-----------|--|---------|------|
| REV       | DESCRIPTION  | DATE    | APPV |
| A         | Add heat shrink, new frame, revised stripping instruct./dims | 4/27/10 | CJ   |

SIDE VIEW



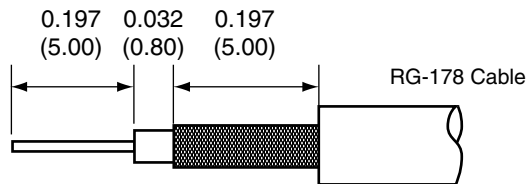
CONSUMA015-R178 ASSEMBLY INSTRUCTIONS

1. Strip the cable to the recommended dimensions.
2. Solder the support onto the braid.
3. Place the spacer onto the center conductor.
4. Solder or crimp the socket onto the center conductor.
5. Insert the socket, center conductor, spacer, and support into the body until the top of the socket is even with the white insulation in the body.
6. Crimp the tail of the body onto the support with a 0.093" hex crimp tool.

NOTES: (UNLESS OTHERWISE SPECIFIED)

1. ALL DIMENSIONS ARE IN INCHES [mm].
2. DIMENSIONS APPLY AFTER FINISHING.
3. MANUFACTURE TO BE COMPLIANT WITH EU RoHS DIRECTIVE.
4. SAFETY BREAK ALL SHARP CORNERS AND EDGES .02 MAXIMUM.

RECOMMENDED CABLE STRIPPING DIMENSIONS



WARNING: THIS DRAWING CONTAINS PROPRIETARY INFORMATION THAT IS THE SOLE PROPERTY OF CONNECTOR CITY, AND SHALL BE TREATED AS SUCH. NO DISCLOSURE OR REPRODUCTION OF THIS DOCUMENT IS PERMITTED, IN WHOLE OR IN PART, WITHOUT THE EXPRESS WRITTEN PERMISSION OF CONNECTOR CITY OR ITS DESIGNATED AGENTS.

|           |  |                 |
|-----------|--|-----------------|
| MATERIAL: | TOLERANCES:<br>.020 [0.50]-.200 [5.00]= ±.008 [0.20]<br>.200 [5.00]-1.200 [30.00]= ±.016 [0.40]<br>1.20 [30.0]-4.75 [120.0]= ±.024 [0.60]<br>4.75 [120.0]-12.40 [315.0]= ±.040 [1.0] | PROJECTION:<br> |
| FINISH:   | DRAWN: CJ  | DT: 4/27/10     |
|           | ENGR:  | DT:             |

**CONNECTOR CITY** THE VALUE OF CONNECTIONS  
159 ORT LANE  
MERLIN, OR 97532

TITLE:  
SMA FEMALE BULKHEAD MOUNT CABLE  
END CRIMP WITH O-RING FOR RG178 CABLE

|                  |                             |              |
|------------------|-----------------------------|--------------|
| SIZE<br><b>A</b> | DWG. NO.<br>CONSUMA015-R178 | REV<br>A     |
| SCALE: 2:1       | DO NOT SCALE DRAWING        | SHEET 1 OF 1 |