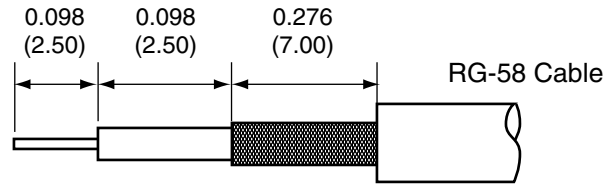
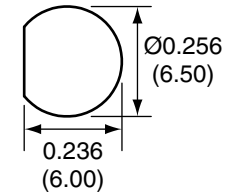


1		
Description	Material	Finish
Body	Brass	Nickel
Socket	BE CU	Gold
Insulation	Teflon	Teflon
Crimp Ring	Brass	Nickel
O Ring	SI Rubber	Rubber
Nut	Brass	Nickel
Washer	Brass	Nickel

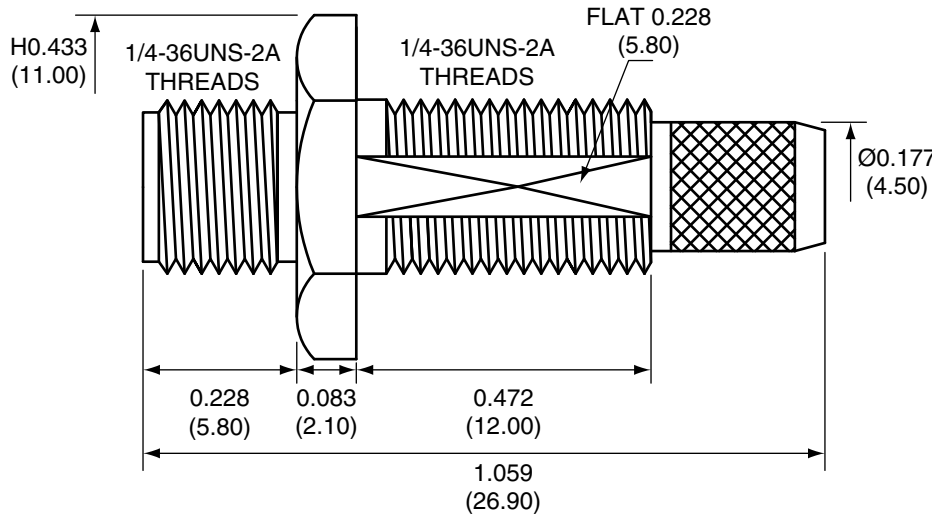
2 RECOMMENDED CABLE STRIPPING DIMENSIONS



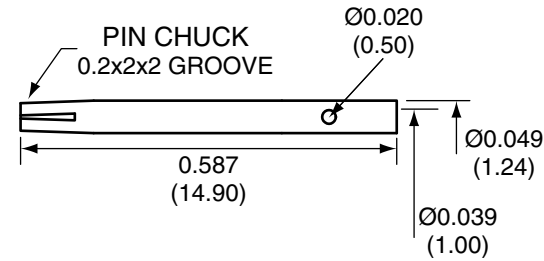
4 RECOMMENDED MOUNTING HOLE



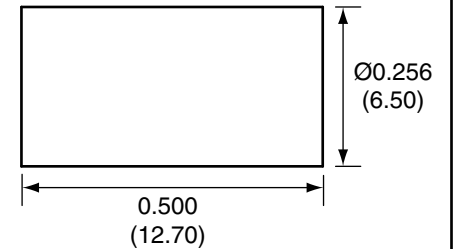
SIDE VIEW



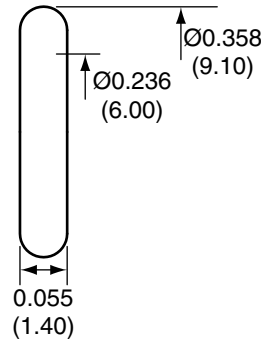
SOCKET



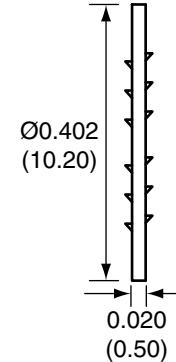
CRIMP RING



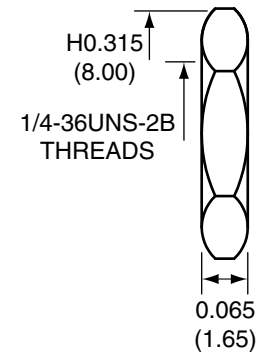
O-RING



WASHER



NUT



CONSMA015-R58 ASSEMBLY INSTRUCTIONS

1. Solder the socket to the center conductor.
2. Insert the socket, center conductor, and insulation into the body.
3. Wrap the braid around the tail of the body and crimp the ring with a hex crimp tool.

Title SMA FEMALE BULKHEAD MOUNT CABLE  
END CRIMP WITH O-RING FOR RG58 CABLE

Part No. CONSMA015-R58 Revision: 1.0

Dimensions: INCHES (mm) Date: 2/21/2008

CONNECTOR CITY  
159 ORT LANE  
MERLIN, OR 97532  
PH (541)-471-6256  
FAX (541)-471-6251

**CONNECTOR CITY**  
THE VALUE OF CONNECTIONS

Sheet 1 of 1