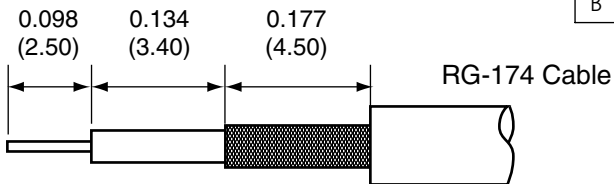


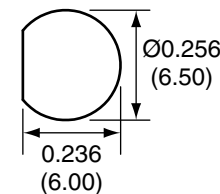
Description	Material	Finish
Body	Brass	Nickel
Socket	BE CU	Gold
Insulation	Teflon	Teflon
Crimp Ring	Brass	Nickel
O Ring	SI Rubber	Rubber
Washer	Brass	Nickel
Nut	Brass	Nickel
Heat Shrink	Polyolefin	Black

RECOMMENDED CABLE STRIPPING DIMENSIONS

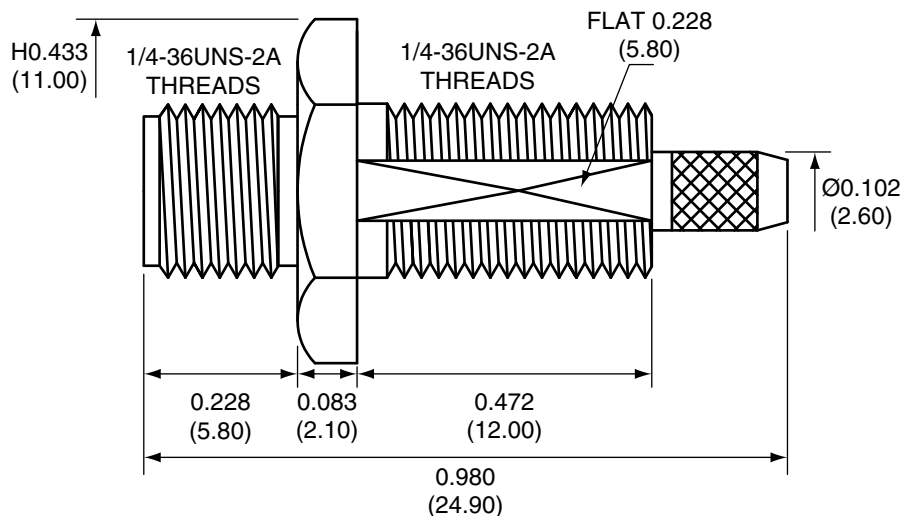


REVISIONS			
REV	DESCRIPTION	DATE	APPV
B	Add assembly instructions and heat shrink	1/8/10	CJ

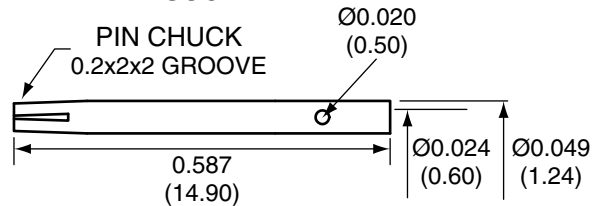
RECOMMENDED MOUNTING HOLE



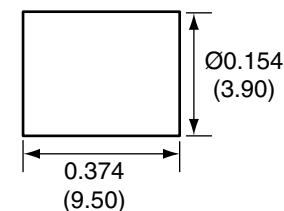
SIDE VIEW



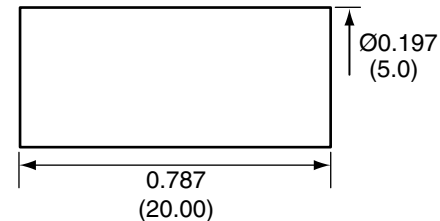
SOCKET



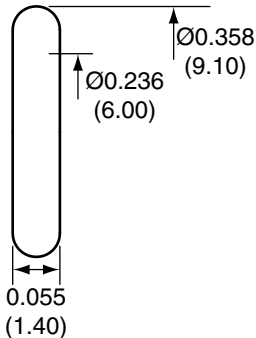
CRIMP RING



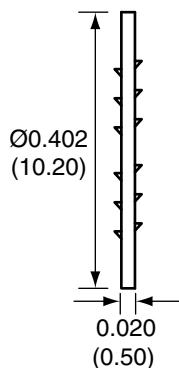
HEAT SHRINK TUBING



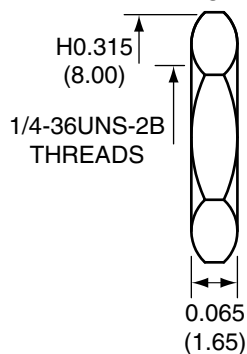
O-RING



WASHER



NUT



NOTES: (UNLESS OTHERWISE SPECIFIED)

1. ALL DIMENSIONS ARE IN INCHES [mm].
2. DIMENSIONS APPLY AFTER FINISHING.
3. MANUFACTURE TO BE COMPLIANT WITH EU RoHS DIRECTIVE.
4. SAFETY BREAK ALL SHARP CORNERS AND EDGES .02 MAXIMUM.

CONSUMA015 ASSEMBLY INSTRUCTIONS

1. Solder the pin to the center conductor or crimp with 0.028" hex crimp tool.
2. Insert the pin, center conductor, and insulation into the body.
3. Wrap the braid around the tail of the body and crimp the ring with a 0.128" hex crimp tool (or one labeled for use with RG-174 cable).
4. Slide heat shrink tubing over crimp ring and then heat.

WARNING: THIS DRAWING CONTAINS PROPRIETARY INFORMATION THAT IS THE SOLE PROPERTY OF CONNECTOR CITY, AND SHALL BE TREATED AS SUCH. NO DISCLOSURE OR REPRODUCTION OF THIS DOCUMENT IS PERMITTED, IN WHOLE OR IN PART, WITHOUT THE EXPRESS WRITTEN PERMISSION OF CONNECTOR CITY OR ITS DESIGNATED AGENTS.

CONNECTOR CITY 159 ORT LANE
THE VALUE OF CONNECTIONS MERLIN, OR 97532

TITLE:
**SMA FEMALE BULKHEAD MOUNT CABLE
 END CRIMP WITH O-RING FOR RG174 CABLE**

MATERIAL:	TOLERANCES: .020 [0.50]-.200 [5.00]= ±.008 [0.20] .200 [5.00]-1.200 [30.00]= ±.016 [0.40] 1.20 [30.0]-4.75 [120.0]= ±.024 [0.60] 4.75 [120.0]-12.40 [315.0]= ±.040 [1.0]	PROJECTION:
FINISH:	DRAWN: CJ	DT: 1/8/10
	ENGR:	DT:

SIZE	DWG. NO.	REV
A	CONSUMA015	B
SCALE: 2:1	DO NOT SCALE DRAWING	SHEET 1 OF 1